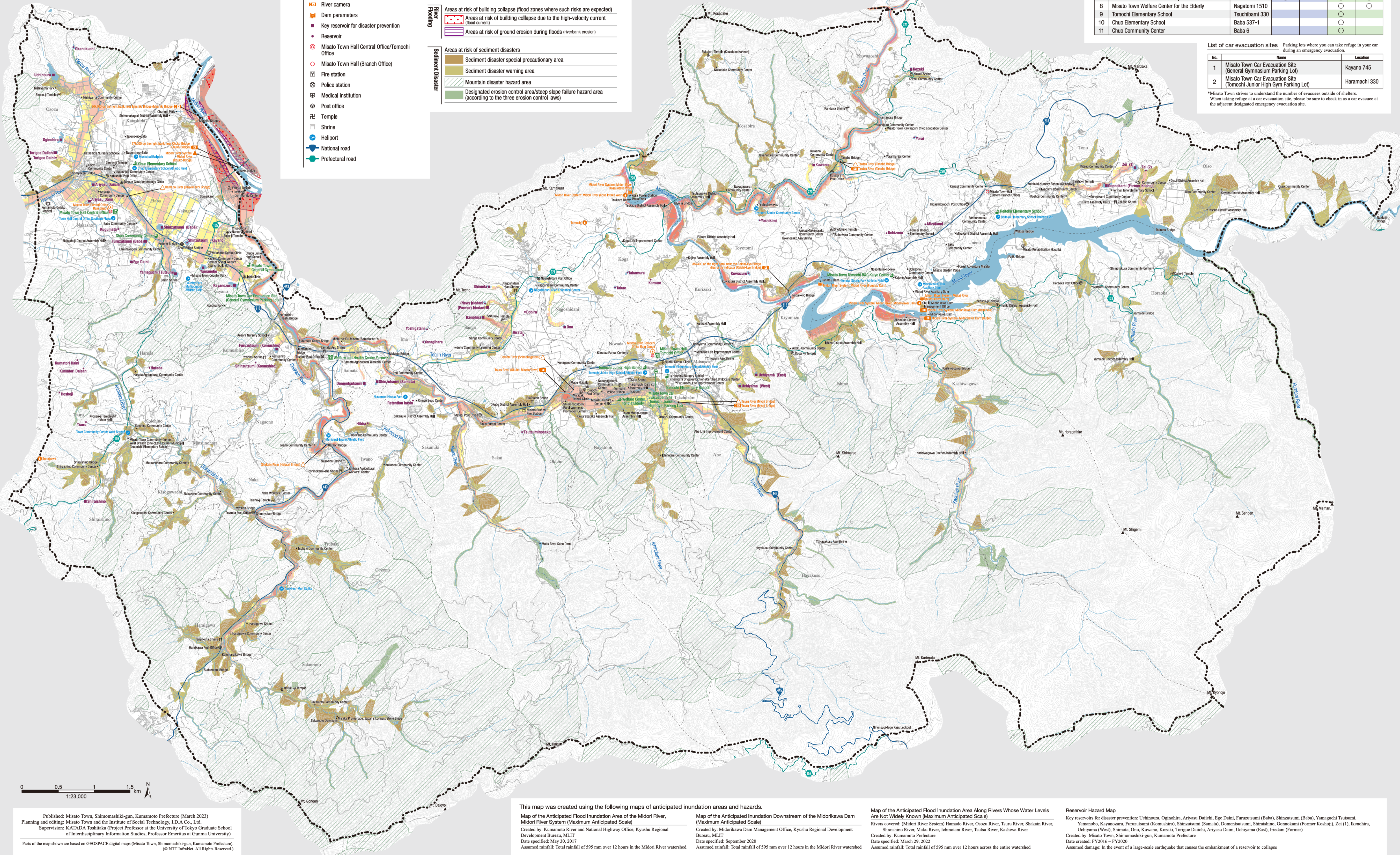


Misato Town Hazard Map

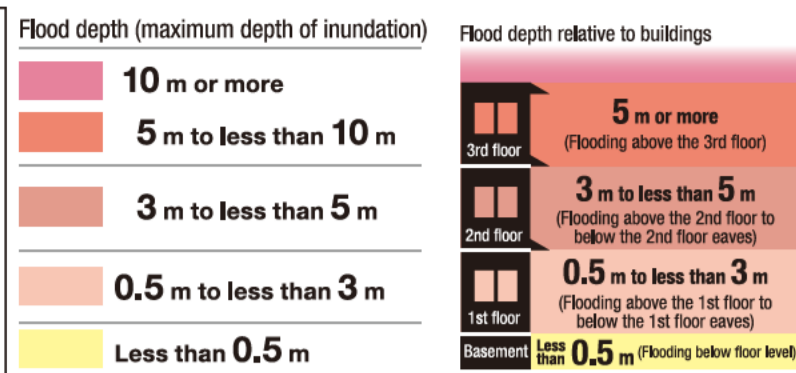
Floods, sediment disasters,
and reservoir overflows



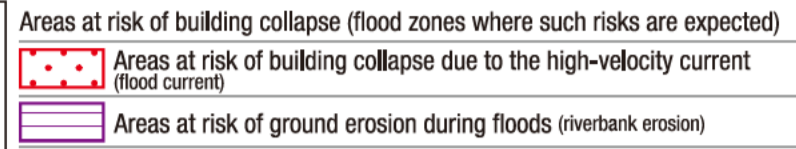
Legend

- Designated shelter/designated emergency evacuation site
- Designated emergency evacuation site
- Car evacuation site
- Water level monitoring station
- Simple water level gauge
- Rain gauge station
- Simple rain gauge station
- River camera
- Dam parameters
- Key reservoir for disaster prevention
- Reservoir
- Misato Town Hall Central Office/Tomochi Office
- Misato Town Hall (Branch Office)
- Fire station
- Police station
- Medical institution
- Post office
- Temple
- Shrine
- Helipoint
- National road
- Prefectural road

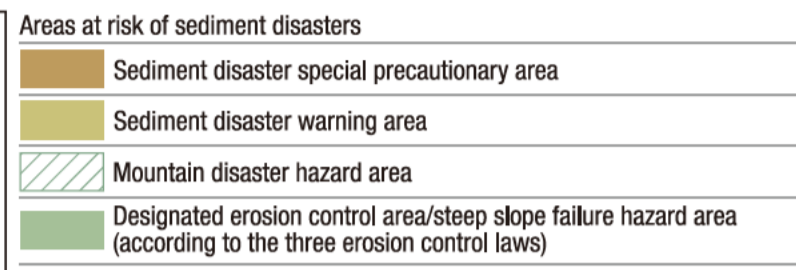
River Flooding and Reservoir Overflows



River Flooding



Sediment Disaster



Misato Town Disaster Response Guidebook

URL <https://www.town.kumamoto-misato.lg.jp/>

This guidebook explains how to respond to possible disasters (flood, sediment, and earthquake disasters) in Misato Town. An e-book version is available for easy viewing on a computer or smartphone.



Misato Town Hazard Maps (Online Version)

URL <https://misato.nigedoki-map.com/>

Maps of flood, sediment, and earthquake hazards are available for viewing on a computer or smartphone. When accessed from a smartphone, users can easily look up information about their home or current location.



List of designated shelters/ designated emergency evacuation sites

No.	Name	Location	Flood/Sediment Disaster	Designated shelter	Emergency evacuation site	Earthquake	Designated shelter
1	Misato Town General Gymnasium	Kayano 745					
2	Misato Town Welfare and Health Center Yu-no-Kaen	Samata 338					
3	Tomochi Junior High School	Haramachi 330					
4	Reitoku Elementary School	Ueno 1944					
5	Misato Town Hall Central Office	Baba 1100					
6	Misato Town Hall Tomochi Office Conference Building	Mitsuwa 420					
7	Misato Town Tomochi B&G Kaiyo Center	Ueno 3701-1					
8	Misato Town Welfare Center for the Elderly	Nagatomi 1510					
9	Tomochi Elementary School	Tsuchibami 330					
10	Chuo Elementary School	Baba 537-1					
11	Chuo Community Center	Baba 6					

Designated shelter: A place where people who have evacuated to escape a disaster may take refuge for a certain period of time.

Designated emergency evacuation site: A place where people can evacuate to in an emergency to survive a disaster.

List of car evacuation sites

No.	Name	Location
1	Misato Town Car Evacuation Site (General Gymnasium Parking Lot)	Kayano 745
2	Misato Town Car Evacuation Site (Tomochi Junior High Gym Parking Lot)	Haramachi 330

*Misato Town strives to understand the number of evacuees outside of shelters. When taking refuge at a car evacuation site, please be sure to check in as a car evacuee at the adjacent designated emergency evacuation site.

This map was created using the following maps of anticipated inundation areas and hazards.

Map of the Anticipated Flood Inundation Area of the Midori River, Midori River System (Maximum Anticipated Scale)
Created by: Kumamoto River and National Highway Office, Kyushu Regional Development Bureau, MLIT
Date specified: May 30, 2017
Assumed rainfall: Total rainfall of 595 mm over 12 hours in the Midori River watershed

Map of the Anticipated Inundation Downstream of the Midorikawa Dam (Maximum Anticipated Scale)
Created by: Midorikawa Dam Management Office, Kyushu Regional Development Bureau, MLIT
Date specified: September 2020
Assumed rainfall: Total rainfall of 595 mm over 12 hours in the Midori River watershed

Map of the Anticipated Flood Inundation Area Along Rivers Whose Water Levels Are Not Widely Known (Maximum Anticipated Scale)
Rivers covered: (Midori River System) Hamado River, Oozo River, Tsuru River, Shakinai River, Shiraishino River, Maki River, Ichinotani River, Tsutsu River, Kashiwa River
Created by: Kumamoto Prefecture
Date specified: March 29, 2022
Assumed rainfall: Total rainfall of 595 mm over 12 hours across the entire watershed

Reservoir Hazard Map
Key reservoirs for disaster prevention: Uchinoura, Oginohira, Ariyasu Daiichi, Ege Daini, Furuzutsumi (Baba), Shinzutsutsumi (Baba), Yamaguchi Tsumui, Yamanoh, Kayanazura, Furuzutsumi (Komashiro), Shinzutsutsumi (Samata), Domentutsumi, Shiraishino, Gonnokami (Former Koshoji), Zei (1), Ikenohira, Uchiyama (West), Shimota, Ono, Kuwana, Kozaki, Torigoe Daiichi, Ariyasu Daini, Uchiyama (East), Iridani (Former)
Created by: Misato Town, Shimomashiki-gun, Kumamoto Prefecture
Date created: FY2016 - FY2020
Assumed damage: In the event of a large-scale earthquake that causes the embankment of a reservoir to collapse